

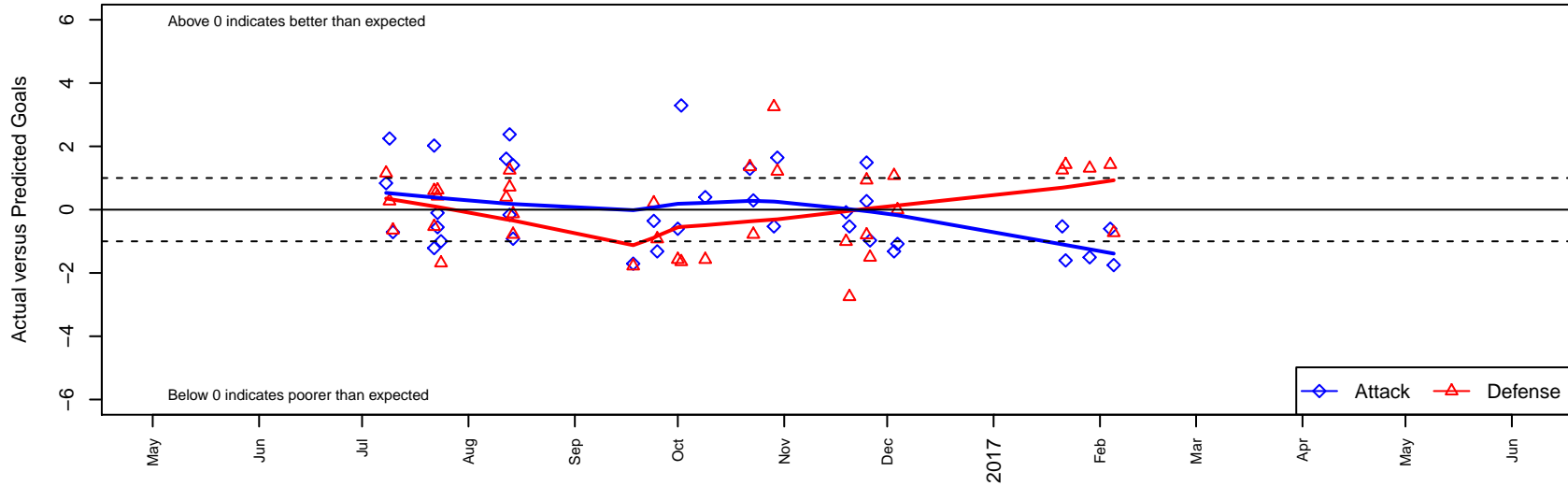
Spokane Sounders A B01

SSC Shadow
 Spokane, WA
 B01 total strength=1665
 attack=25.94 defense=15.47
 fall league = RCL B01 Div 1
 notes= Pellicio 2016

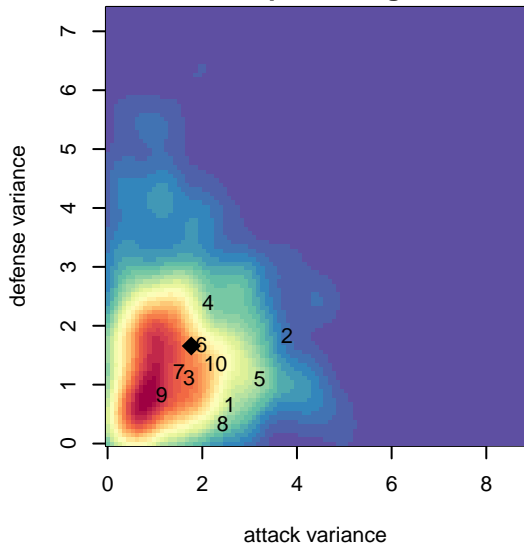
alt names used:
 SSC SHADOW SOUNDERS 01 (WA)
 SSC SOUNDERS SOUNDERS 01 (WA)
 Spokane Sounders B01-A
 Spokane Sounders B01-A
 Spokane Sounders B01-A

Venues played:
 2016 Nike Crossfire Challenge Super Group U'
 2016 Oswego Nike Cup U16
 2016 Les Schwab NW Cup U18/19 U19
 2016 RCL B01 Div 1
 2016 Nomads Thanksgiving 1st Division U16
 2016 WYS Championship B01

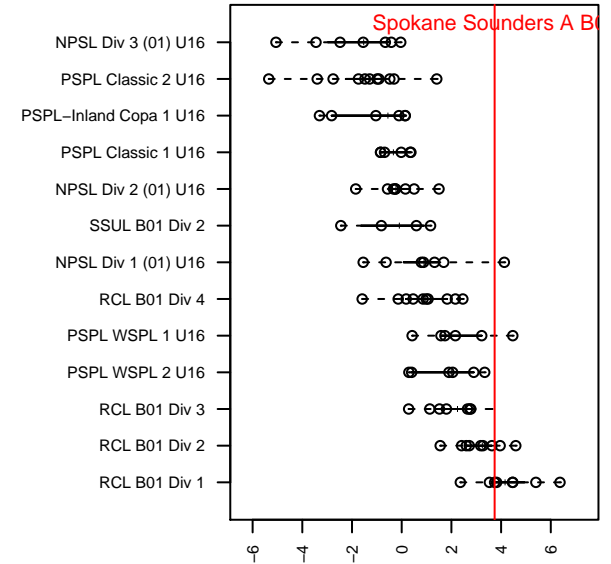
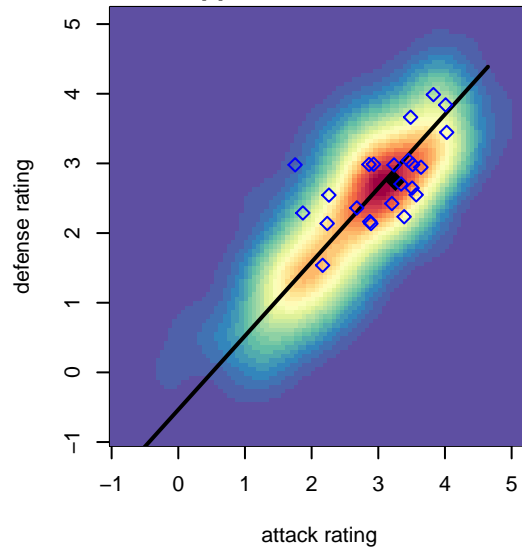
Spokane Sounders A B01
 Dots are actual minus expected GF (blue circles) and GA (red triangles).
 Blue line is smoothed change in attack strength. Red is smoothed change in defense strength.



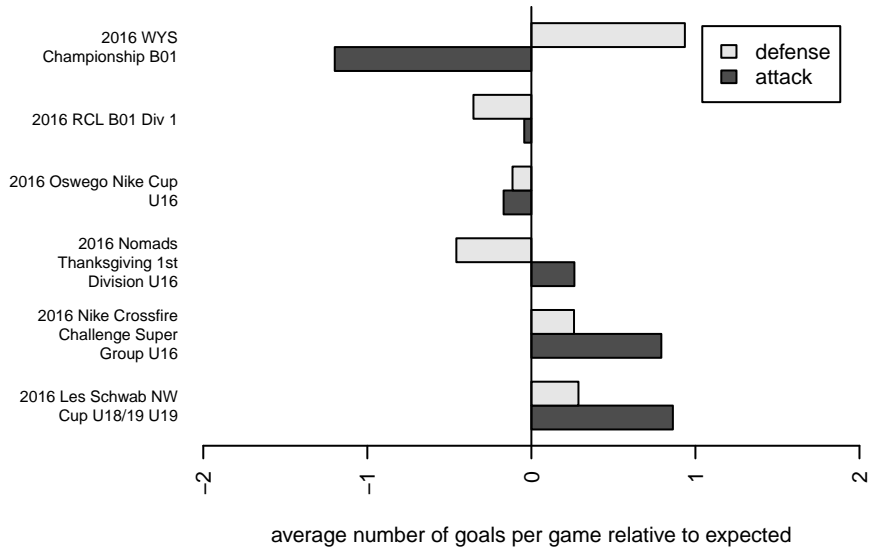
**attack and defense variance (black dot)
relative to other teams
and top 10 in region**



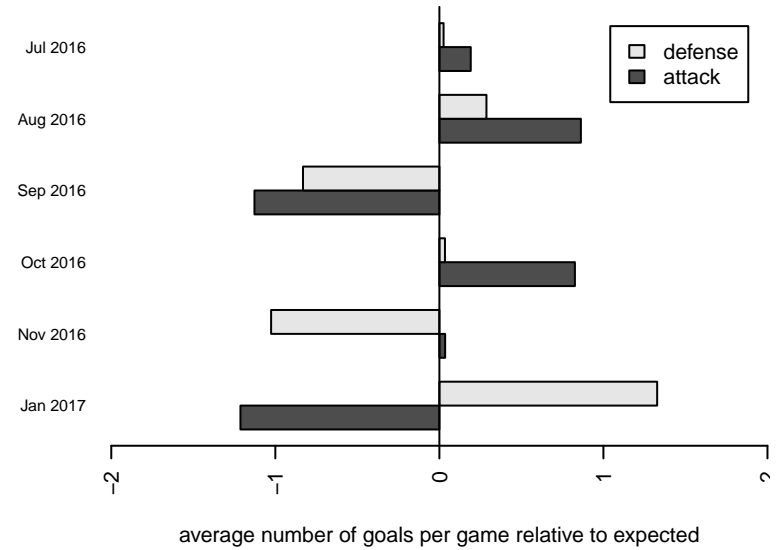
**attack and defense rating
relative to others at age
and all opponents in last 13 months**



Performance relative to 13 month average



Performance relative to 13 month average



date	home		away		venue	pred.home	pred.away
2017-02-05	WA Rush B01	3	Spokane Sounders A B01	0	2016 WYS Championship B01	2.27	1.75
2017-02-04	GS Surf A B01	0	Spokane Sounders A B01	1	2016 WYS Championship B01	1.42	1.60
2017-01-29	Spokane Sounders A B01	0	Washington Timbers Red B01	0	2016 WYS Championship B01	1.51	1.31
2017-01-22	GS Surf A B01	0	Spokane Sounders A B01	0	2016 WYS Championship B01	1.42	1.60
2017-01-21	Seattle United Copa B01	2	Spokane Sounders A B01	0	2016 WYS Championship B01	3.25	0.53
2016-12-04	PacNW Maroon B01	2	Spokane Sounders A B01	1	2016 RCL B01 Div 1	1.99	2.08
2016-12-03	Eastside FC Red B01	1	Spokane Sounders A B01	0	2016 RCL B01 Div 1	2.08	1.32
2016-11-26	Arsenal FC Academy USSDA B01	5	Spokane Sounders A B01	0	2016 Nomads Thanksgiving 1st Division U1	3.49	0.97
2016-11-25	Spokane Sounders A B01	5	San Diego SC Academy Navy B01	1	2016 Nomads Thanksgiving 1st Division U1	3.51	1.93
2016-11-25	Santa Clara Sporting Green B01	4	Spokane Sounders A B01	1	2016 Nomads Thanksgiving 1st Division U1	3.20	0.73
2016-11-20	Spokane Sounders A B01	0	Seattle United Copa B01	6	2016 RCL B01 Div 1	0.53	3.25
2016-11-19	Spokane Sounders A B01	2	PacNW Maroon B01	3	2016 RCL B01 Div 1	2.08	1.99
2016-10-30	WPFC Black B01	1	Spokane Sounders A B01	3	2016 RCL B01 Div 1	2.21	1.36
2016-10-29	Seattle United Copa B01	0	Spokane Sounders A B01	0	2016 RCL B01 Div 1	3.25	0.53
2016-10-23	Spokane Sounders A B01	3	Crossfire Yakima A B01	2	2016 RCL B01 Div 1	2.71	1.22
2016-10-22	Spokane Sounders A B01	2	Crossfire Premier A B01	1	2016 RCL B01 Div 1	0.71	2.35
2016-10-09	Spokane Sounders A B01	2	GS Surf A B01	3	2016 RCL B01 Div 1	1.60	1.42
2016-10-02	Crossfire Premier A B01	4	Spokane Sounders A B01	4	2016 RCL B01 Div 1	2.35	0.71
2016-10-01	GS Surf A B01	3	Spokane Sounders A B01	1	2016 RCL B01 Div 1	1.42	1.60
2016-09-25	Spokane Sounders A B01	0	Eastside FC Red B01	3	2016 RCL B01 Div 1	1.32	2.08
2016-09-24	Spokane Sounders A B01	1	WPFC Black B01	2	2016 RCL B01 Div 1	1.36	2.21
2016-09-18	Crossfire Yakima A B01	3	Spokane Sounders A B01	1	2016 RCL B01 Div 1	1.22	2.71
2016-08-14	Spokane Sounders A B00	3	Spokane Sounders A B01	1	2016 Les Schwab NW Cup U18/19 U19	2.22	1.92
2016-08-14	Spokane Sounders A B01	3	Spokane Sounders B B98	2	2016 Les Schwab NW Cup U18/19 U19	1.60	1.87
2016-08-13	NK United B99	0	Spokane Sounders A B01	6	2016 Les Schwab NW Cup U18/19 U19	0.71	3.62
2016-08-13	ASE Emerald B99	0	Spokane Sounders A B01	3	2016 Les Schwab NW Cup U18/19 U19	1.25	3.16
2016-08-12	Breakers Black B99	0	Spokane Sounders A B01	3	2016 Les Schwab NW Cup U18/19 U19	0.39	1.39
2016-07-24	Salem Chelsea B01	3	Spokane Sounders A B01	2	2016 Oswego Nike Cup U16	1.31	3.00

date	home		away		venue	pred.home	pred.away
2016-07-23	THUSC Steel B01	0	Spokane Sounders A B01	4	2016 Oswego Nike Cup U16	0.42	4.10
2016-07-23	Spokane Sounders A B01	2	FC Portland Navy B01	0	2016 Oswego Nike Cup U16	2.56	0.62
2016-07-22	Spokane Sounders A B01	4	Eastside Timbers Black B01	0	2016 Oswego Nike Cup U16	5.21	0.60
2016-07-22	PSPL Academy B01	2	Spokane Sounders A B01	5	2016 Oswego Nike Cup U16	1.47	2.98
2016-07-10	Crossfire Premier A B01	3	Spokane Sounders A B01	0	2016 Nike Crossfire Challenge Super Grou	2.35	0.71
2016-07-09	Spokane Sounders A B01	4	WA Rush B01	2	2016 Nike Crossfire Challenge Super Grou	1.75	2.27
2016-07-08	Spokane Sounders A B01	3	Eastside Timbers Red B01	1	2016 Nike Crossfire Challenge Super Grou	2.16	2.15